

The MayTec Linear System

MayTec offers a wide range of accessories to expand and simplify the integration of linear guidance technology with profile technology.

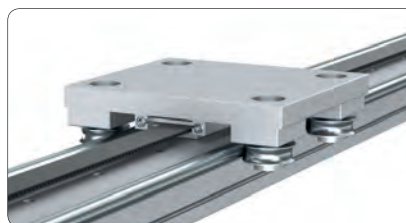
The integration of various linear guidance hardware is also possible due to the modular concept of the system.

Economical and functional solutions can now be realized with a minimum of time and effort.

Encased roller bearings

A tried and tested linear guidance system with a large range of application possibilities. Depending on the required specifications and accuracy, encased roller bearings can be used for low or high load applications.

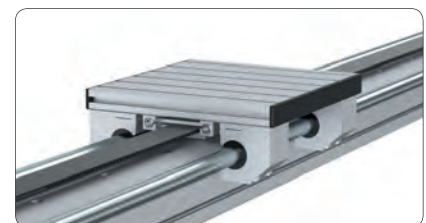
- suitable for rough or dirty applications
- high force tolerance with low wear
- high accuracy with low friction
- long life expectancy



Shaft guidance

A proven and extremely flexible guidance system due to the compact nature of the construction. Depending on the application requirements, either sliding or ball bearing guides can be used. Shaft guide systems are used where high accuracy along with carriage stability is required.

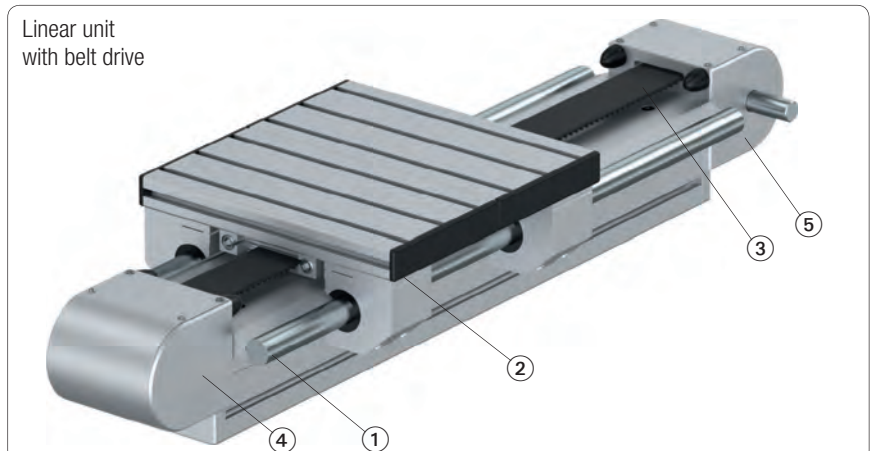
- compact form
- low resistance
- high stability
- high accuracy
- quiet rolling noise level

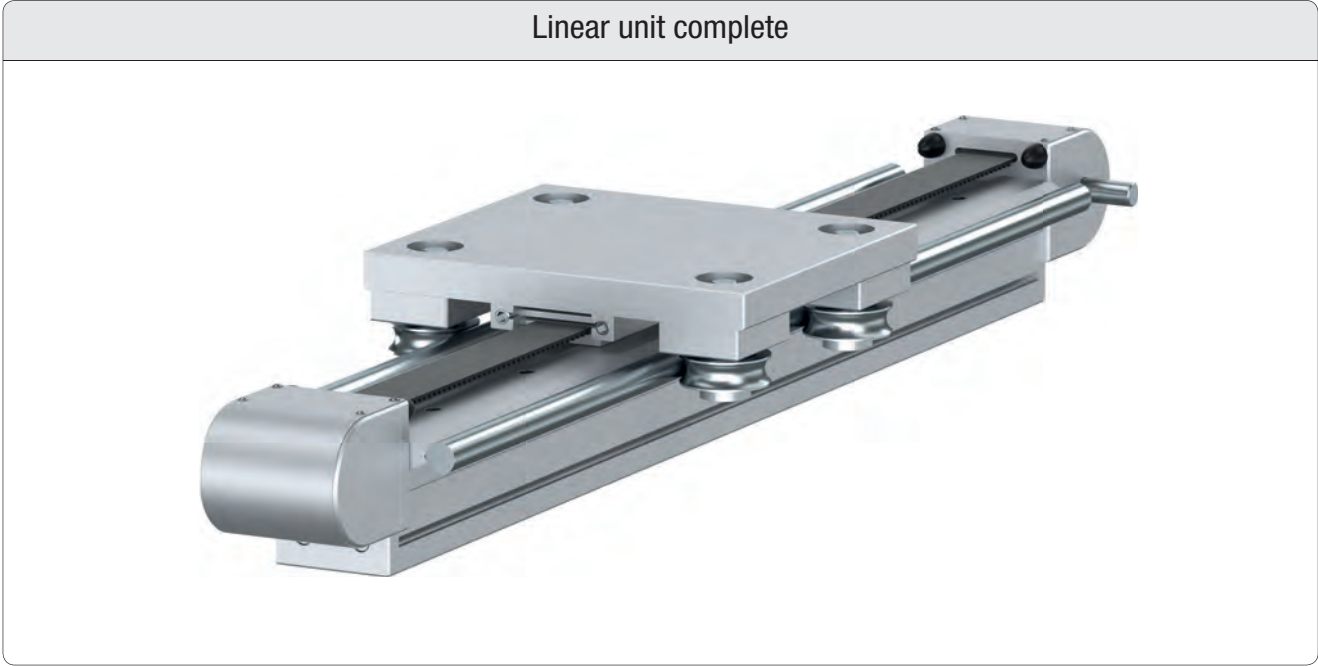


Component groups of linear units

- ① Linear shaft guidance
- ② Carriage unit
- ③ Drive unit
- ④ Turning unit without shaft end
- ⑤ Turning unit with shaft end

Linear unit with belt drive



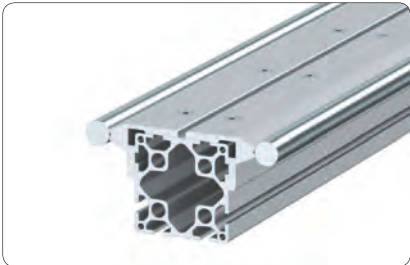


Linear shaft guidance

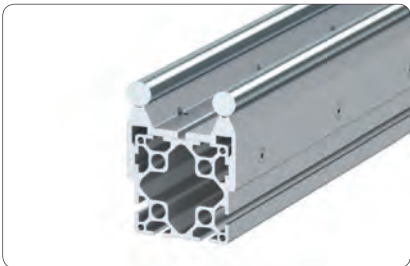
Single profile design

Frame design

horizontal



vertical



shaft-Ø

12 mm

16 mm

20 mm

25 mm

Carriage unit

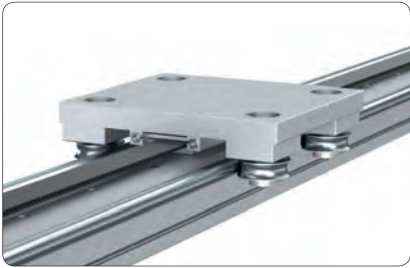
Encased guide block



Sliding guide block / ball bearing guide



Exposed roller guide



Roller

fixed



Eccentric



adjustable topside

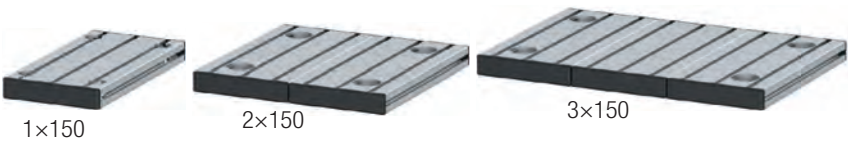
adjustable underside

Carriage plates

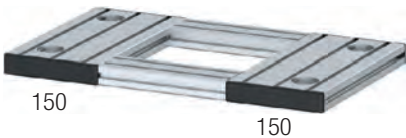
Alu plate



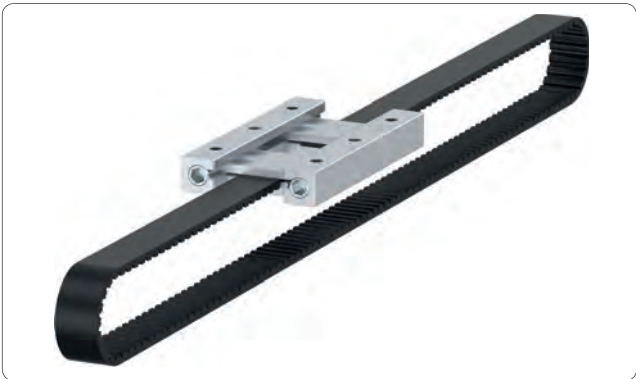
Profile plate



Profile frame



Drive unit



Toothed belt		
Type:	5M	8M
width:	15	20
	25	30
		50

Turning unit

Shaft



Shaft

